

Smart solutions for
Commercial buildings

fermacell®

JH JamesHardie®

Agile

Durable

Contents

- 4 A smarter way
- 8 Our product range
- 10 fermacell® board
- 20 PowerPanel® H20 board
- 24 Get in touch



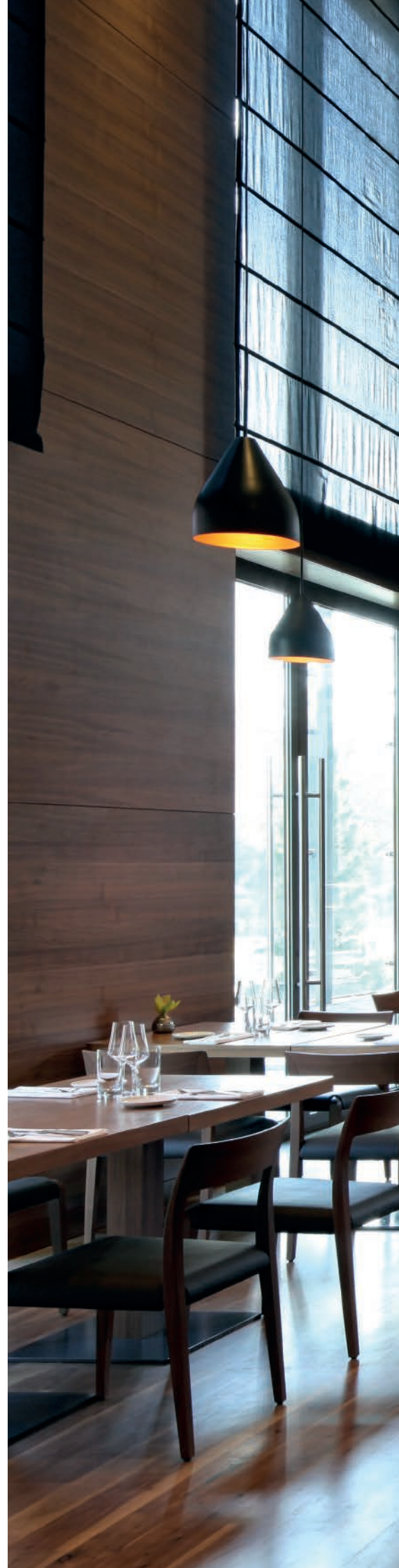


A smarter way

The first gypsum fiber board in Germany rolled off the production line at the fermacell® plant in Münchehof near Goslar in the early 1970s. This laid the foundation for the success of the fermacell® brand.

The high-quality, particularly stable finishing board has fundamentally changed the entire drywall construction industry and thus made the fermacell® brand big and strong. Today, fermacell® gypsum fibre boards and the water and weather resistant Powerpanel® H2O boards stand for fast and economical expansion concepts for all areas of interior construction.

Pioneering innovations have made fermacell® one of the best known building material brands in the industry and the European market leader for high-quality gypsum fibre and cement-bonded boards.





Designing exceptional commercial buildings

UAB Sveika Statyba helps clients, architects and installers working in the commercial sector to deliver schemes of outstanding value and design.

Our portfolio includes complete floor to ceiling solutions. Our materials offer benefits around space saving, enhanced strength, fire protection, acoustic performance, impact resistance, moisture resistance and much more.





Our product range

Complete floor to ceiling solutions

1

fermacell® fibre gypsum for walls

fermacell® fibre gypsum is a multi-purpose dry lining board that combines design flexibility with the optimum fire, acoustic and impact performance.

2

fermacell® fibre gypsum for floors

fermacell® flooring is a dry screed solution that optimises thermal conductivity and is quick to install. Available with an optional wood fibre layer for advanced acoustic performance.

3

PowerPanel® H20 board

PowerPanel® H20 board is a water resistant construction material ideal for walls, floors and ceilings. It's specifically designed for use in rooms where there are damp conditions.

4

HardieWindbreaker® sheathing board

HardieWindbreaker® sheathing is an engineered fibre cement weather defence barrier. The boards will not warp or shrink when exposed to adverse climates, and offer a guaranteed 12 months' exposure during construction.

5

James Hardie® cladding

From planks to large format facade panels, use HardiePanel® cladding or HardiePlank® weatherboard to achieve your desired aesthetic. Both products offer an A2 non-combustible solution with in-built pest, rot, fade and weather resistance.

1

fermacell® fibre gypsum for walls
Use internally on walls as a multi-purpose, dry lining board.

2

fermacell® fibre gypsum for floors
Use internally on floors as a dry screed solution.



**Fire
Resistant**

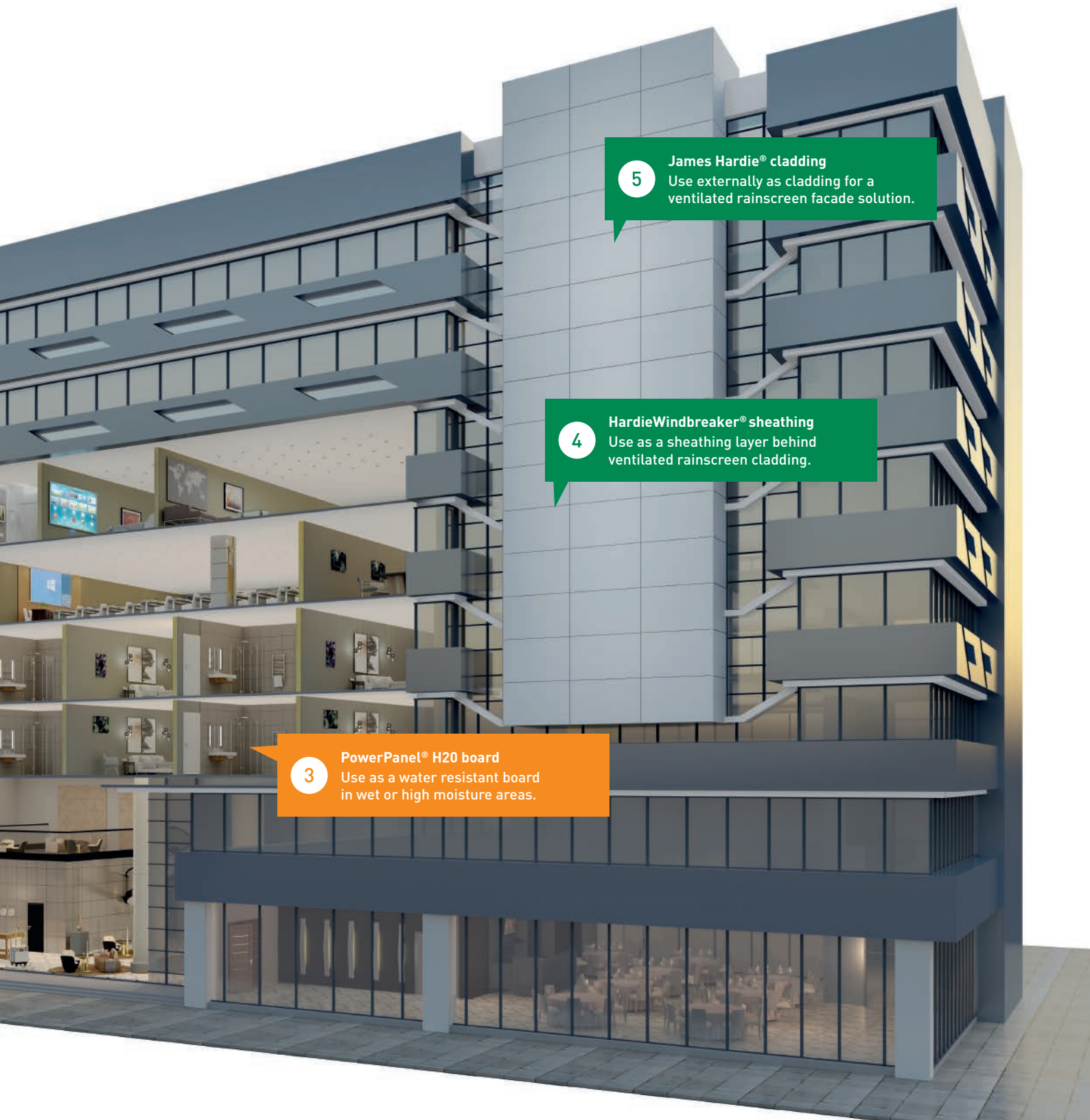


**Moisture
Resistant**



**Made
to Last**

All our fibre cement and fibre gypsum building products offer engineered, high performance, smart building solutions that are made to last.



5

James Hardie® cladding

Use externally as cladding for a ventilated rainscreen facade solution.

4

HardieWindbreaker® sheathing

Use as a sheathing layer behind ventilated rainscreen cladding.

3

PowerPanel® H20 board

Use as a water resistant board in wet or high moisture areas.

fermacell® fibre gypsum

Multi-purpose performance board

fermacell® fibre gypsum is a multi-purpose dry lining board that offers a single layer solution, available in a range of sizes and thicknesses.

From wall to floor design, one board does it all, minimising wet trades on site, increasing design flexibility and saving space whilst meeting or exceeding building regulations.

Our boards also have the added benefit of being able to be installed before the building is water tight, to enable ease and speed of fitting.



Ultimate flexibility

Using our dry lining system reduces the need for costly plywood patterning, with a high hanging strength that ensures room layouts are future-proofed to offer the ultimate design flexibility.

Simplify your build

Our fermacell™ Fine Surface Treatment (FST) can also be used to finish the boards; a light fill with FST and your walls are ready to accept any covering - wallpaper, paint or tile - after just 45 minutes.



Right Aloft Hotel. fermacell® partitions were specified between all multi-use spaces and bedrooms to provide enhanced acoustic performance and robustness.

Below Mandarin Oriental Hotel. fermacell® boards were used throughout the internal build, finished with FST to provide a high quality finish in-keeping with the luxury of the hotel brand.



fermacell® fibre gypsum

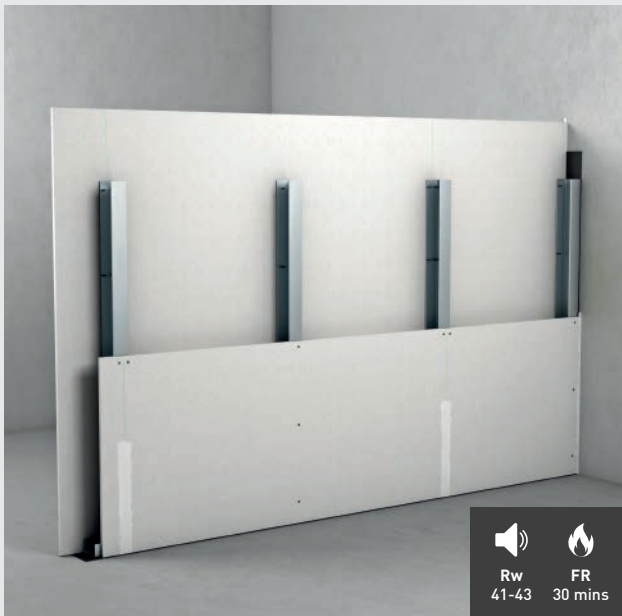
Typical specification for internal partitions

fermacell® dry lining offers an ideal solution for quality internal walls.

Our boards offer optimum acoustic and fire performance, whilst also delivering design flexibility, as the walls can be easily reconfigured. Our slimline dry lining also saves important wall space to maximise room yields.



fermacell® 1S15 steel stud partition



System specification: 1S15

12.5 mm fermacell® board either side of 75 mm steel stud.

fermacell® 1S21 steel stud partition



System specification: 1S21

12.5 mm fermacell® board either side of 75 mm steel stud with 60 mm mineral stone wool insulation, density 30 kg/m³.

fermacell® 1S31 steel stud partition



System specification: 1S31

12.5 mm + 10 mm fermacell® board either side of 75 mm steel stud with 60 mm mineral stone wool insulation, density 35 kg/m³.

fermacell® fixing and load-holding strengths



Fixing and maximum load-holding strengths are shown above, all into a single layer of 12.5 mm fermacell® board without plywood pattressing. N.B safety factor of 2.



"We specified fermacell® boards to reduce the labour on site had we opted for blockwork or plasterboard. The product exceeded all our specification requirements and allowed the project to be successfully delivered on time."

Technical Manager, Design & Technical Bureau



fermacell® fibre gypsum

Typical specification for floors

fermacell® flooring offers an engineered dry screed overlay for optimising both acoustic and thermal performance.

The perfect partner for underfloor heating systems, fibre gypsum boosts heat with over double the thermal conductivity of timber. A specialist acoustic overlay board is available with an additional wood fibre layer to further dampen both impact and airborne noise.



Right Hyatt Hotel.
fermacell® flooring was
specified throughout
all guest bedrooms due
to ease and speed of
installation.



fermacell® 2E31 acoustic overlay system



System specification: 2E31 acoustic overlay system

2 x 10 mm fermacell® boards plus 10 mm wood fibre. 4kN permissible point load can be achieved with the addition of a third layer of 10 mm fermacell® board.

Science Gallery, Kings College, London

WHERE ART AND SCIENCE COLLIDE


Free entry



King's College London welcomes
you to Science Gallery London

Major supporters





“The venue is very busy with many events hosted throughout the year. The space is ever changing and we needed a product that would accept fixing wherever was required. We specified fermacell® dry lining throughout to ensure we could meet these changing building demands.”

Greg Shannon, Director, LTS Architects

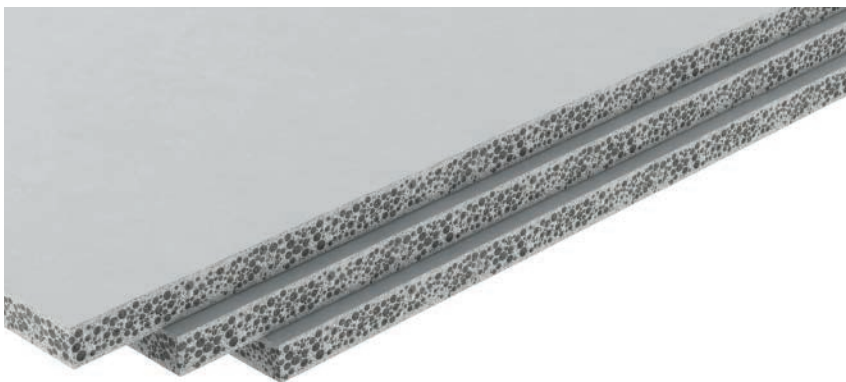
PowerPanel® H20 board

Ultimate protection against moisture damage

PowerPanel® H20 board is an advanced water resistant construction material ideal for walls, floors and ceilings.

It's specifically designed for use in rooms where there are damp conditions, such as leisure and sports centres, swimming pools and catering facilities.

Whereas traditional materials such as plywood and plasterboard are liable to swell, break or disintegrate when wet, PowerPanel® board stays strong and firm, no matter how damp it gets.



Fire and moisture resistant

PowerPanel® H20 board is an A1 non-combustible product exceeding all building regulations for fire resistance, whilst also being impervious to water damage.

Optimised acoustics

Our boards are made with reinforced glass fibre to offer the ultimate in strength and acoustic performance, minimising both impact and airborne sound.





PowerPanel® H2O board

Typical specification for wet areas

PowerPanel® H2O board is ideal for use in showers, bathrooms and swimming pool areas to protect tiles and grout from moisture damage.

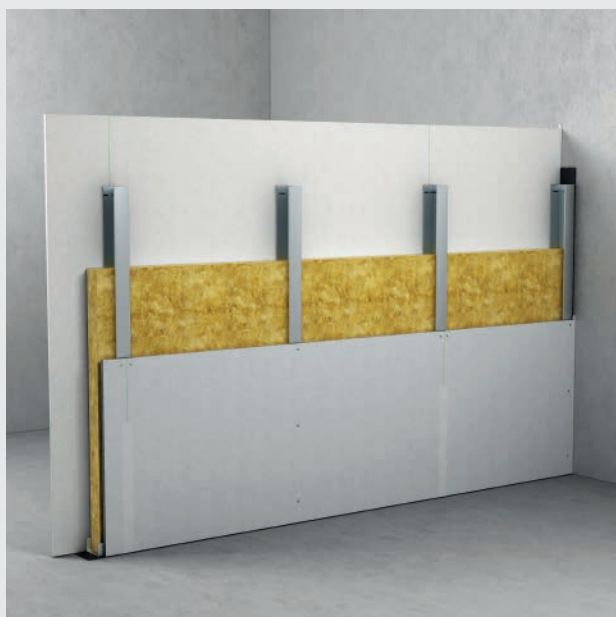
It's quick and easy to fit on to masonry, timber or steel and installation is based on the same simple construction techniques that are used with standard dry lining materials.



Right University Arms Hotel.
Our boards were used
throughout all bathrooms
to offer moisture protection
and prevent tiles and grout
from cracking.



PowerPanel® H20 board



System specification: PowerPanel® H20 board

12.5 mm fermacell® fibre gypsum board fixed to the outer side of the 75 mm steel stud plus 12.5 mm PowerPanel® H20 board fixed to the inner side, with 60 mm mineral stone wool insulation, density 25 kg/m³.

PowerPanel® H20 board



Get in touch

Further product information:

phone +370 605 02747

email uzsakymai@sveikastatyba.lt

web www.sveikastatyba.lt
www.fermacell.com

Image copyrights

Front © Rachael Dere | © Hufton+Crow

4-5 © James McDonald

6-7 © Miljenko Burnfest @ AdobeStock

8-9 © Martine Hamilton Knight

14 © Peter Landers Photography

16-17 © Dennis Gilbert

19 © Bombaert & ThamKC @ istockphoto

20 © James McDonald

22-23 © Peter Landers Photography

24 © puntoimmaginesrl.it

